

# George Washington Primary School

## Friday Newsletter

6<sup>th</sup> December 2024



Dear Parents and Carers,

**Attendance** School's overall attendance for this week has been 92% and the total for the year-to-date is 94.9%. The expectation is that all schools have attendance of 96%+. Well done to Mrs Kane's class and Miss Hussain's class who have had the highest attendance this week in their key stages and will enjoy some extra playtime next week as a reward. We will hold our half-termly prize draw on the last week of term – please encourage your child to come to school as much as possible to be in with a chance of winning the prize or a certificate for good, or improved, attendance.

### EYFS & KS1

RLM	RSS	1NM	1MS	2AK	2BG
94.7%	88.7%	81.3%	85.3%	96.3%	95.3%

### KS2

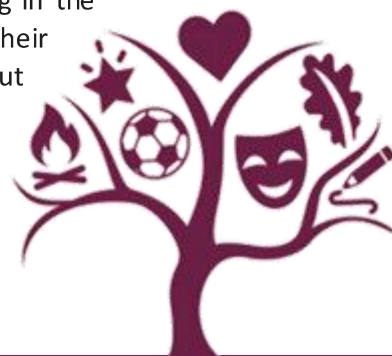
3CL	3AW	4AL	4KH	5JP	5RA	6EA	6GW
90.1%	91.2%	95.6%	97.9%	94.1%	92.7%	97.8%	88.3%

**Christmas Fayre** Thank you to everyone who came along and supported our wonderful Christmas Fayre. It was a truly magical night and it's always such a joy when we can welcome our community through our school doors. We were very lucky to have a visit from Mr Claus himself, and we even spotted some of our Kindness Elves sneaking a peek at him in the grotto! There was an abundance of luck at the tombola, buckets of bravery in the Bushtucker Trials and a whole lot of festive fun throughout the entire fayre. We're already counting down until next year!

**Prizes** The raffle from our Fayre was drawn today with the help of some Y6 children. The winning numbers and a video to accompany it are on our school Facebook page. The winning teddy name was 'Biscuit' - well done to Charlie in Y1MS!

**Year 3 and 4 Performance** The children in year 3 and 4 will be asking for a small donation during their performance next week. The money collected will be used to buy Christmas treats for the staff and residents at Donwell Care Home. If possible, we ask that you bring some loose change for the children to collect towards the end of both performances.

**Futsal** Over the last 4 weeks, our Year 5/6 football team has been competing in the Washington Primary Schools Football Association (WPSFA) Futsal league. Their performance has been outstanding this year. They have not only won the league but finished with a plus 14 goal difference. Well done for another well-deserved trophy for the Year 5/6 football team.



**Governor Vacancy** As we have had two nominations for our parent governor vacancy, we need to hold an election involving our parents and carers. You should have received information about this process including the personal statements of the two nominees as well as ballot papers. Should you not have these, please contact the school office who will be able to provide spares. All ballot papers must be returned to school **by 9am on 19<sup>th</sup> December**.

## Christmas Dates

Date	Event	Year Group
09.12.24	Reception Christmas Performance – 2:30pm	Reception
10.12.24	Year 1/2 Christmas Performance – 2.15pm	Year 1 and 2
11.12.24	Year 1/2 Christmas Performance – 9:30am	Year 1 and 2
11.12.24	Year 3/4 Christmas Performance – 2.00pm	Year 3 and 4
11.12.24	Y2 Christmas Trip – Custom House (PM)	Year 2
12.12.24	Reception Christmas Trip – Wharton Park (PM)	Reception
12.12.24	Y1 Christmas Trip – Hall Hill Farm	Year 1
12.12.24	Year 3/4 Christmas Performance – 9:30am	Year 3 and 4
12.12.24	Year 5/6 Christmas Performance – 2.00pm	Year 5 and 6
13.12.24	Year 5/6 Christmas Performance – 9:30am	Year 5 and 6
13.12.24	Y3 Christmas Trip – Sunderland Empire (PM)	Year 3
17.12.24	Reception Christmas Party	Reception
17.12.24	Year 1/2 Christmas Party	Year 1 and 2
17.12.24	Y5 Christmas Trip – Glass Centre (5JP – AM / 5RA – PM)	Year 5
18.12.24	Year 3/4 Christmas Party	Year 3 and 4
18.12.24	Year 5/6 Christmas Party	Year 5 and 6
19.12.24	Christmas lunch & Christmas Jumper	Whole School
19.12.24	Christmas church service (children only) (AM)	Whole School
19.12.24	Y4 Christmas Trip – Newcastle Theatre (PM)	Year 4
20.12.24	Carols Around the Tree: 9.15am - EYFS & KS1 / 10.15am - KS2	Whole School

**Show tickets** Requested tickets have been sent out with children for the reception and Y1/Y2 performances next week. The tickets for the remaining shows will be sent out on Monday. There are a limited number of spare tickets available for the Y1/2 morning performance on Wednesday 11<sup>th</sup> December. These will be allocated on a first-come, first-served basis – please contact the school office. If there are any spare tickets for the KS2 performances, a message will be sent out via ParentPay.

**Easyfundraising** We are asking for your support to help George Washington raise money – this will benefit all children in school, including our Year 6s who are going to France next year. It does not cost you anything to do – simply sign up at [easypfundraising.org.uk](https://www.easypfundraising.org.uk) and select George Washington Primary School as your cause. Then, when you shop online, go to the website you wish to use via the app and shop as normal. The retailer will then donate a percentage of your shop to school. There are thousands of well-known companies signed up. Keep an eye on our Facebook page for more details. Even if you don't use it, by signing up before Friday 13<sup>th</sup> December, school will earn £1 per person once we have 10 supporters.



**Streetworx** We have previously mentioned that we are supporting the Streetworx charity this year, who provide support to homeless people in Newcastle. In school, we will be making up some donation gift bags and kindly ask that, if you would like to, you donate the items listed by no later than Monday 9<sup>th</sup> December. To allow us to make up bags containing different items, we are asking each year group to donate different things:

Reception	Adult hats and gloves
Year 1	Crisps and biscuits (individually wrapped e.g. Twix, kit-kat)
Year 2	Bottled water and soft drinks
Year 3	Toothbrushes and toothpaste
Year 4	Soap and wet wipes
Year 5	Chapsticks and hand warmers
Year 6	Socks and underwear (adult, male or female, any size)

If you would like further information in order to make an individual donation, please call school and ask to speak to Miss Gray.

**Winter HAF** The providers of the winter holiday activity and food programme are now taking bookings. All children and young people in receipt of means tested free school meals or who fall within a vulnerable category are entitled to 4 free sessions during the holiday period. Please see the link below for more information and a list of available activities in the Washington area.

<https://www.togetherforchildren.org.uk/article/21867/Holiday-Activity-and-Food-HAF-Programme>

**Washington Community Fun Run** *Slow Runners and Fun Runners* are teaming up with Washington MIND and Washington Leisure Centre to introduce a Saturday morning event weekly at 10am, starting from the leisure centre. It will be an untimed and non-competitive run using the paths around Princess Anne Park. It is a community, health, wellness and social interaction initiative to promote fun, fitness and friendship in our locality. The event is dog and child friendly and fully insured. More information can be found on Facebook @slowrunnersandfunrunners



**Football Superstars** Two of our promising footballers have recently had a brilliant opportunity to train alongside Sunderland Ladies. Freya and Jessica from Y5 play with their Sunday team, Hilda Park, as well as our own GWPS girls' football team. After the training session, they got a photograph with Sunderland Ladies footballer, Emily Scarr. What a brilliant experience!

**House Points** As you can see with the scores below, the running totals are very close between all 4 houses. There are only a few days left for children to collect points. The house with the most points by the end of next week will enjoy an end-of-term treat on Monday 16<sup>th</sup> December – look out for next week's newsletter for more details.

R. Knight

Mr R. Knight  
Head of School



**Forest School Dates** - Forest School has finished for this term to allow for Christmas Activities. Please keep an eye on Friday newsletters for when Forest School will resume in the spring term.

**PE and Swimming** - A timetable for PE and swimming is listed below. On their PE days, children should come into school in PE kit for the full day. School PE kit is a white T-shirt with dark coloured shorts or trousers. Football kits or similar clothing should not be worn.

Year Group	PE Day	Swimming Day
Reception	Wednesday	
Year 1	Monday	
Year 2	No PE this week due to pantomime trip and school performance	
Year 3	No PE this week due to pantomime trip	
Year 4	Thursday	Tuesday- 4AL Friday – 4KH
Year 5	No PE this week due to pantomime performances	Wednesday- 5JP Thursday- 5RA
Year 6	Monday	



# Achievers of the Week & House Points



Year Group	Class	Achievers of the Week
Reception	RLM	Elle Thubron
	RSS	Vinnie Nutting
Year 1	1MS	Tiana Mansell-Render
	1NM	Aria-Rose Ivison
Year 2	2AK	Lily-Penny Morris
	2BG	Hollie Stokoe
Year 3	3AW	Elena Dixon
	3CL	Juliette Matthews
Year 4	4AL	Vinnie Scott
	4KH	Jamie Reay
Year 5	5RA	Charlie Scott
	5JP	Finlay McAllister
Year 6	6EA	Martha Winter
	6GW	Andrew Conn

## House Points



3530



3536



3558



3357

